

[Meet Amy](#)

[Brand Resources](#)

[Product Update](#)

[Partner Survey](#)

Welcome to the Channel Connection Newsletter

Welcome to the first edition of our Aspect partner newsletter, The Channel Connection! We're excited to kick things off with a fresh, engaging format designed to keep you informed, inspired, and connected. Whether it's team introductions, key product updates, or must-have resources, we've got everything you need—right here.

BIG NEWS

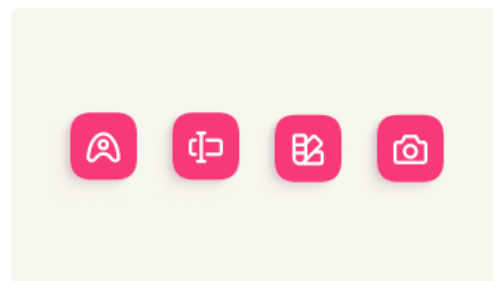
New Aspect Brand Resources to Elevate Your Success

With the launch of the new Aspect, we've rolled out a suite of resources designed to help you seamlessly integrate the updated look and feel into your operations.



The New Aspect Webinar

Learn all about the new Aspect and how we are bringing



Aspect Brand Center

Fresh, modern branding are ready for you to use in your

the legacy of workforce management to the next generation of innovation.

marketing efforts. Easily align them with your brand while showcasing the new Aspect identity.

[Watch Now](#)

[Visit the brand center](#)



Workforce Enterprise Pitch Decks for Customers and Partners

Monthly Partner Newsletters

Showcase the value of Aspect's workforce engagement solutions with success stories, roadmaps, and more. Customizable to suit your audience. Available now in the [Partner Portal](#).

Stay ahead with regular insights and important updates delivered straight to your inbox. These newsletters are packed with valuable content to help you maximize our partnership.

COMING SOON

Future brand resources



Partner Portal Updates

We'll be revamping the [portal](#) to make it easier to access all the tools and resources you need.



Management Development Funds (MDF) Program

We're revisiting the MDF program to better maximize your marketing impact with support from our team to further drive growth.

PRODUCT UPDATE

Exciting updates are coming to Aspect Workforce Enterprise™ with the release of v24 on October 18th



Aspect Brand Evolution

Expect a fresh look with updated logos, new icons, and vibrant color palettes that reflect our innovative direction.



Aspect League™ (formerly Alvaria Motivate) Enhancements

Admins now benefit from streamlined access with added permissions and a simplified KPI management interface —no JSON code required.



Aspect Quality™ Module

A new Task Management feature and seamless integration with UJET and Google CCAIP enhance usability.



Aspect Workforce™ Module

Improved scheduling flexibility, new visual workforce planning tools, and expanded data import options with Cloud Storage support.

Product Discontinuation

As part of our innovation journey, WebDAV (Web Distributed Authoring and Versioning) will be sunset in April 2025 and only impacts customers hosted in the Alvaria AWS Public Cloud. Now is the perfect time to make a switch to the new Aspect Cloud solution for Workforce Engagement Management.

[Download WebDAV Data Sheet](#)

LEADERSHIP SPOTLIGHT

Meet Amy Link, VP of Business Development



We're thrilled to welcome Amy Link, who joined Aspect in August 2024 as our VP of Business Development, leading the partner channel and new logo sales. With over eight years of experience in Telecommunications, Amy has held key leadership roles at Zayo Group, where she excelled in both Product and Sales.

Amy's passion for solving complex customer challenges, paired with her empathetic leadership style, makes her a perfect fit for Aspect as we continue to grow in the Customer Contact and CX industry. She's known for her ability to deliver creative, impactful solutions and build strong, collaborative teams.

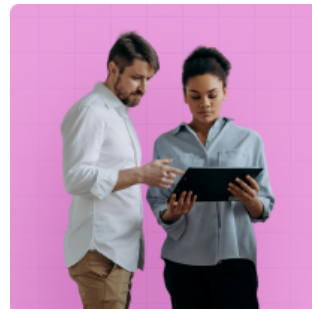
A Colorado resident with an MBA from the Leeds School of Business at the University of Colorado, Boulder, Amy remains connected to her alma mater as a member of the MBA Alumni Board. When she's not working, you can find her outdoors, whether skiing in the Alps or hiking the Rockies—she's always chasing adventure!

SPOTLIGHT ON YOU

Your feedback matters

This newsletter isn't just about sharing updates – it's about hearing from you. Take our [Partner Survey](#) and let us know what's working, what's not and how we can better support you. Your input shapes the future of our partnership program!

[TAKE PARTNER SURVEY](#)



STAY TUNED FOR MORE

This is just the beginning

In future editions, look for spotlights on high-performing partners, exclusive tips, and more insider knowledge to help you succeed. Until then, feel free to reach out to your support team anytime. Cheers to a successful partnership!

Aspect Channel Partner Team

Channel.ProgramOffice@alvaria.com



Alvaria | 211 Perimeter Center Parkway Suite 200 Atlanta, GA 30346 | 1-978-250-7900

©2024 Alvaria, Inc. Trademark notice: Alvaria, the Alvaria logo, the Aspect logo, Aspect Workforce Enterprise, Aspect Workforce, Aspect Quality, Aspect Performance, Aspect League, and Aspect WorkforceOS are trademarks of Alvaria, Inc. in the United States and other countries.